



COMMUNITY
LAB

The Healing Garden Permaculture Design, Crete



Exact location:

<https://maps.app.goo.gl/NAVzteohWKEpboZV6>



Context

01

Aim

The vision of the client
and our approach

02

Data

The climate and the
situation before

03

The design

Steps to an educative
permaculture garden

04

The implementation

1 year of implementation

01

The aim



The healing garden

- Client: a local association called “Kissamos Social spot” (KISS) : social work with marginalized people (immigrants, disabled people, youth etc).
- Aim: An accessible by wheelchair educative permaculture garden on public land
- Mission: Create accessible therapeutic natural spaces for marginalized people. Involve local community in the implementation.
- Vision: Create job positions for disabled people based on permaculture



Designer: Christos
Karystinos

Implementation: Christos
Karystinos with the help of
volunteers and sometimes
paid workers.

Cooperation between:
Community Lab, KISS,
Municipality of Kissamos

Starting Date: 15/11/22

Budget

- Initial funding: 5000 euros
- Extra funding: 3000 euros
- Support: Municipality of Kissamos (Land and Earthworks)
- Extra support: Locals with plants and work



Available funds for implementation

Future plans:

Crowdfunding

Applying for European Funds about climate action, soil preservation

02

Data

What was already there



COMMUNITY
LAB

11/22: Before intervention

Biggest challenges: Erosion
(20% inclination)
Terraces falling apart
Overgrazed land
Small biodiversity
Dry climate (up to 10
months without rain)



Social context



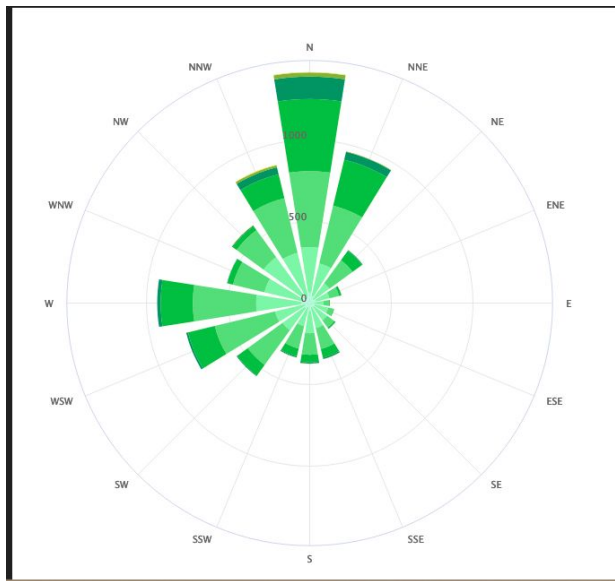


Climate

Prevailing winds: North (12-19 km/h) and
West (5-15 km/h) wind

Temp: Min 4 C , Max 40 C, mean T: 18.3 C,
Plant Hardness Zone: 10b

Rain: Mean Precipitation: 700mm, Max:
50mm (normally), exceptional: 70mm+



The location



Legal Status:

Belongs to Municipality

- Archeological interest
(Should not dig under 0.5 m without permission)
- Cannot build permanent structures with foundation
(special status called Bank of the Earth)



Surface: 0.18 hectares
3 terraces , rest
inclined 2-20%

Semi-urban area,
Access by asphalt road,
next to the central road

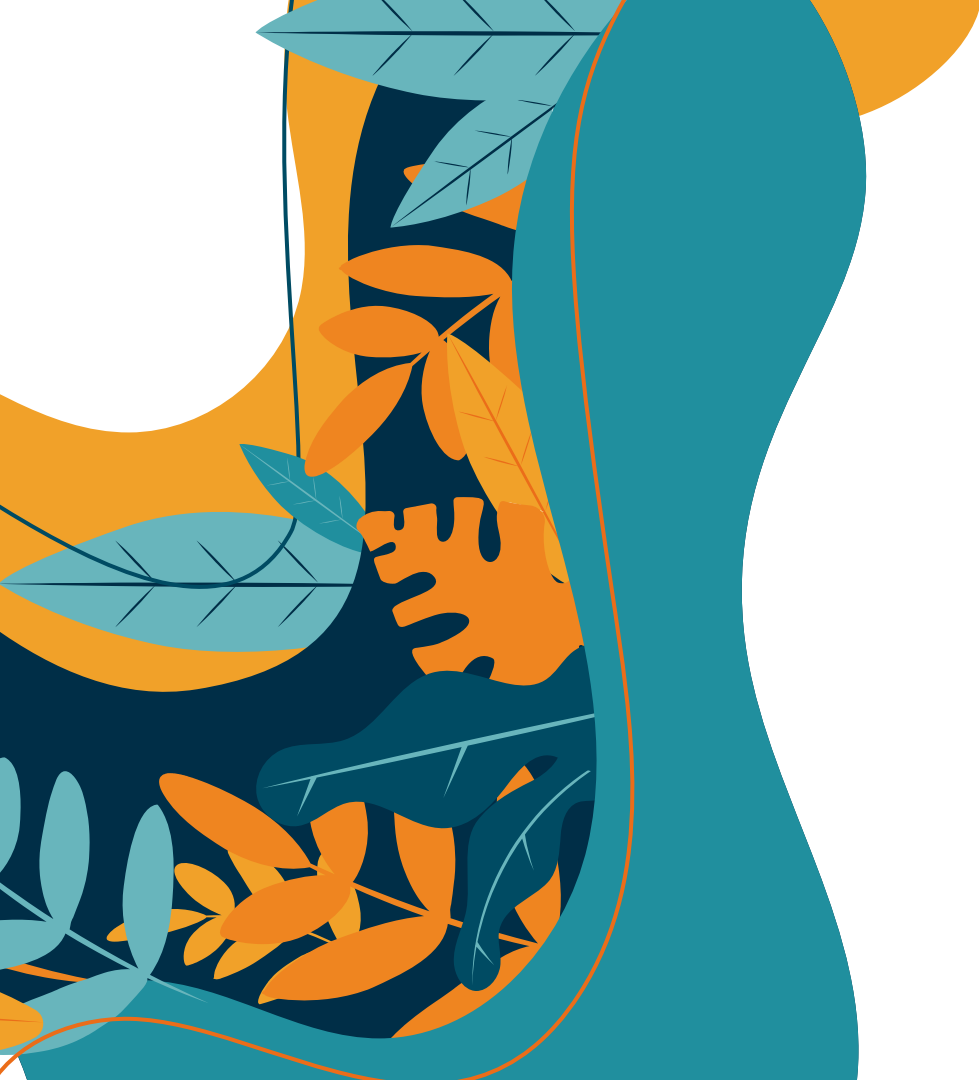
Previous use:
Overtaken by
neighbours

Initial O.M. : 1.8%
No problem with
nutrient deficiencies
(lab tested)

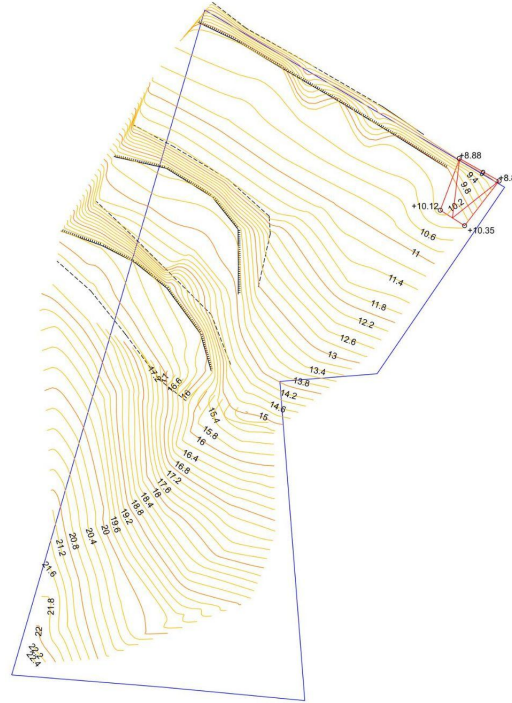


03

The Design



Topographical Map with contours



Zoning

Zone 0

One accessible entrance in the north east

Zone 1

Accessible garden for wheelchair with kiosk for activities

Zone 2

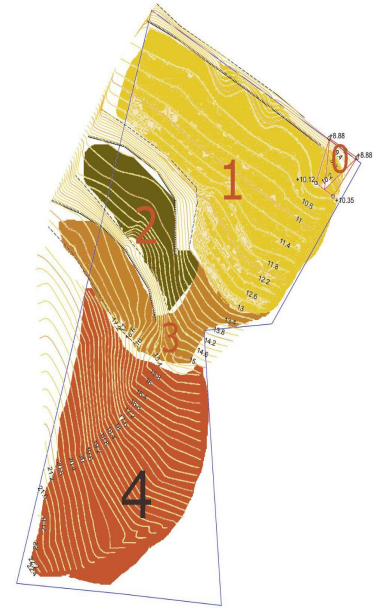
Gardens for production of veggies

Zone 3

Drought -resistant herbs trees

Zone 4

Edible forest with benches



COMMUNITY
LAB

Total Design

ΧΩΡΑΦΙ ΠΟΥ ΘΕΡΑΠΕΥΕΙ

ΣΧΕΔΙΟ Β
ΑΠΟΤΥΠΩΣΗ ΜΕΛΛΟΝΤΙΚΩΝ ΠΑΡΕΜΒΑΣΕΩΝ | ΚΑΙΜΑΚΑ 1 : 150

ΚΥΚΛΟΣ ΜΠΑΝΑΝΙΩΝ
ΚΟΜΠΟΣΤΙΚΗ ΤΟΤΑΛΕΤΑ και ΝΙΠΗΤΗΡΑΣ
ΚΟΜΠΟΣΤ

ΕΙΣΟΔΟΣ

ΒΟΡΕΙΑ ΠΕΖΟΥΔΑ
Ισοπέδωση εδάφους και
δημοσίευση ράβδων για την
προσβασιμότητα με ομοζήσιο ΑμεΑ

ΒΡΥΣΙΜΟ ΔΑΣΟΣ
σε swale



Strategy:
Focus on Zone 1 for
implementing. Zone
2 , 3, 4 minimum
intervention for
water harvesting
and erosion control.



COMMUNITY
LAB

Priorities



Plant the
windbreaker



Avoid erosion,
plant the edges of
the broken
terraces



Biodiversity, plant
mixture of forest
and edible plants



Catch all the
rainwater

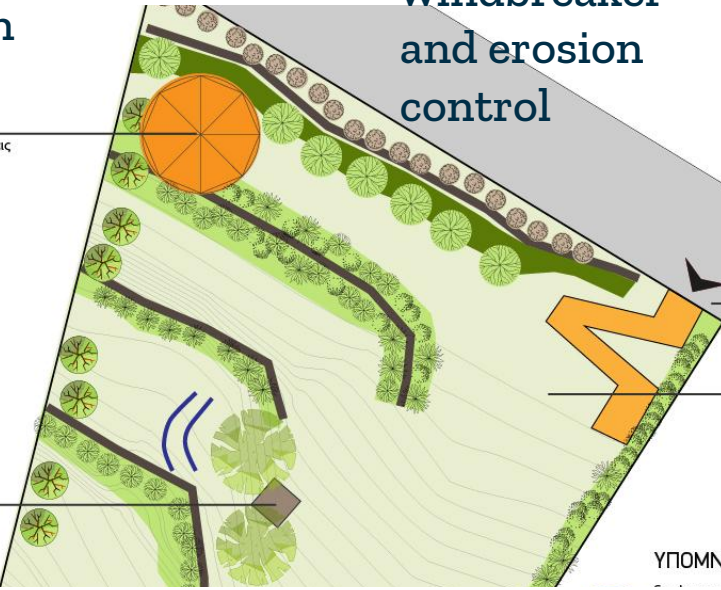
Details (1)



Taproot plants for windbreaker and erosion control

Kiosk with natural local material

ΚΙΟΣΚΙ
με παιδευτικές δράσεις



Entrance with drystone walls and stone pathway for wheelchair

ΕΙΧΩΛΟΣ
ΒΟΡΕΙΑ ΠΕΖΟΥΛΑ
Ισοπέδωση εδάφους και δημιουργία άμβουλιατών προσβασιμότητα με αμαξίδιο ΑμεΑ

ΑΠΟΘΗΚΗ ΕΡΓΑΛΕΙΩΝ
κάτω από τις ελιές

ΥΠΟΜΝΗΜΑ



Details (2)



Swales with zig zag overflows, rocks inside the trench and planted on the outside.

Forest species on the edges of dry creek (light blue)

Herbs on the edges of terraces.

Trunks and rocks as erosion check dams





The idea we copied for accessible parcels



Inspiration





COMMUNITY
LAB

04

Implementation

1 year of implementation of the
design



COMMUNITY
LAB

Actions

workshops

With local young
people



Voluntary planting

Herb planting





Earthworks for water management





List of planted species (10/23)

Acer pseudoplatanus	1
Quercus ihaburensis subsp. macrol	3
Helichrysum stoechas	16
Leucaena leucocephala	3
thymus serpyllum	14
Cupressus sempervirens	7
Rosmarinus Officinalis Prostratus	15
Cercis siliquastrum	7
Capparis spinosa	16
Asparagus acutifolius	1
Carpobrotus modestus	3
Melia Azedarach	1
Mussa subsp.	1
Ligustrum Japonica	1
Hypericum triquetrifolium	5
Veliveria Zizanoides	3
Ficus carica	7
Lavandula pedunculata	2
Rosmarinus Officinalis	13
Ziziphus jujuba	1
Vitis vinifera	6
Eriobotrya japonica	1
Salvia fruticosa	16
Cithmum maritimum	20
Ricinus communis	1
Origanum onites	5
Citrus limon	1
Physalis peruviana	1
Strelizia reginare	1
Sorbus ___	1
Cynara cardunculus	8
Punica granatum	1

Olea europaea var. oleaster	1
Olea europaea	2
Ribes rubrum	2
Aronia ___	1
Rubus ulmifolius	1
ficus indica	1
Pynus amygdaliiformis	1
Medicago arborea	26
Symphlytum officinale	5
Styrax officinalis	8
Phragmites australis	-
Aloe vera	2
Fragaria amananasa	3
Mentha piperrita	4
Myrtus communis	5
Citrus aurantium	1





Soil regeneration



Constant mulching
with woodchips



6m diameter kiosk made out of wood and bamboo

Natural Building





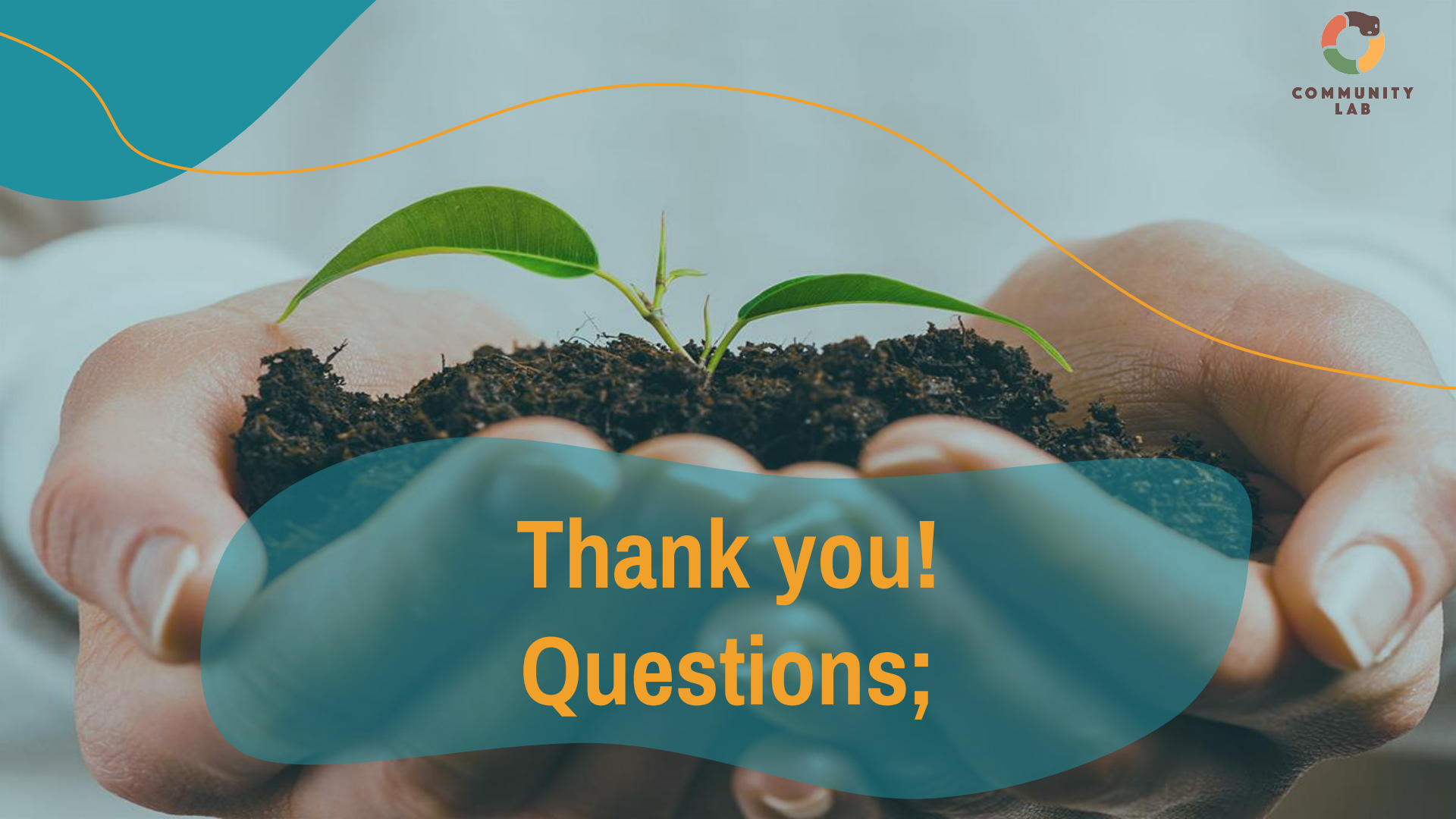
A herb salt made out of herbs from the garden with the help of people with disabilities in the process

First product





COMMUNITY
LAB

A close-up photograph of two hands cupping a mound of dark, rich soil. A small green plant with two leaves and a thin stem is growing out of the soil. The background is a soft, out-of-focus light blue. A teal wavy shape is in the top left corner, and a thin orange line arches over the hands. A large teal rounded rectangle is overlaid on the bottom half of the image, containing the text.

Thank you!
Questions;